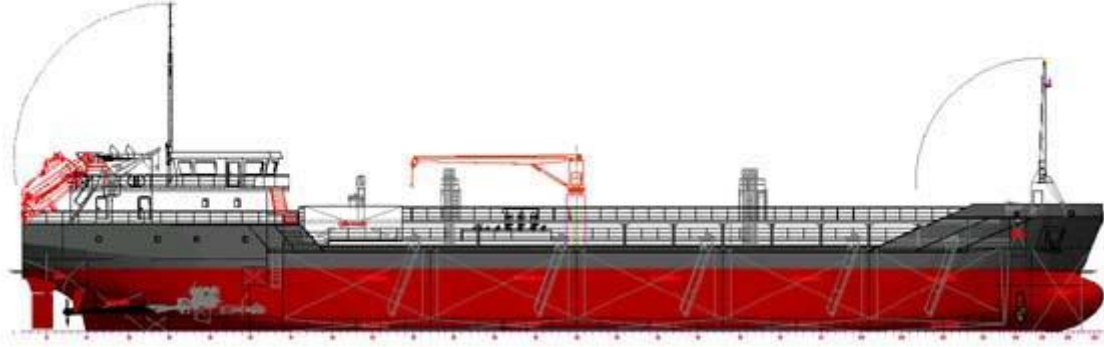


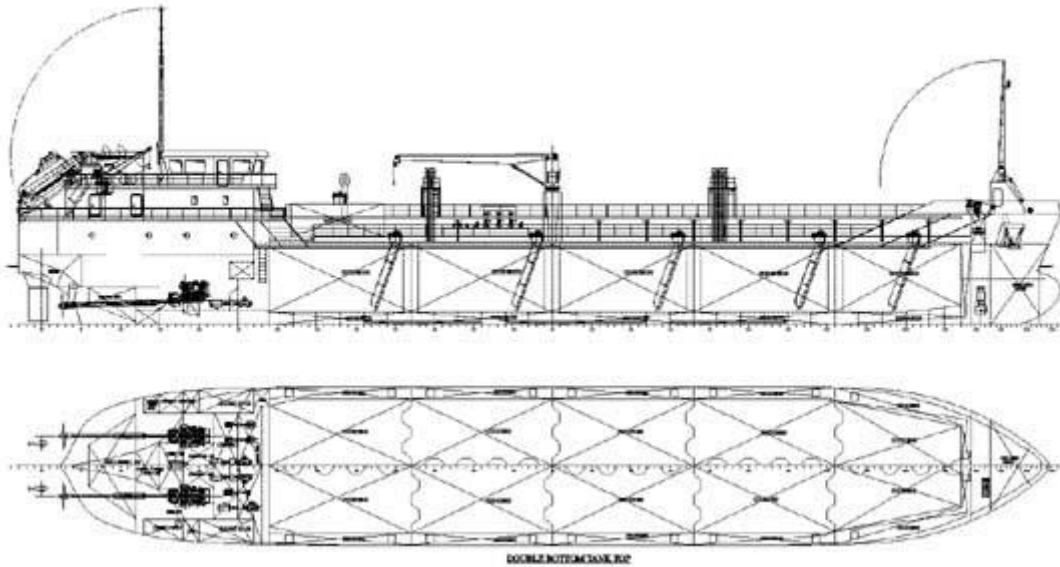
Chemical Tanker M/T Oralake



GENERAL

- Ice-strengthened, single decked, single screw motor ship with double bottom and double skin with coated cargo tanks.
- The hull form is designed for minimum resistance, overall design provides an environmentally friendly, cost-effective, reliable and flexible unit.
- Cargo pump room installation, three segregation.

TYPE	IMO II Chemical Tanker
DEADWEIGHT	2650 tons
OWNER	NavyTime NV
SHIPYARD	Çeliktrans Shipyard / ISTANBUL , Hull No: CS26
DELIVERY	
DESIGN	Delta Marine Engineering and Computer Trading Co. / ISTANBUL
PROJECT NO	T04103



PRINCIPAL DIMENSIONS

LENGTH O.A.	82.3 m
LENGTH B.P.	78.8 m
BREADTH MLD.	12.5 m
DEPTH MLD.	6.10 m
DRAUGHT MLD.	4.7 m

TONNAGE

DEADWEIGHT	2650 tons
GROSS TONNAGE	1850 GRT
NET TONNAGE	900 NRT

CAPACITIES

CARGO	3061 m ³
BALLAST	1307 m ³
HFO	
MDO	150 m ³
LO	10 m ³
FW TANKS	84 m ³
FW TECH.	

SPEED & CONSUMPTION

SPEED	11.5 knots, 90% MCR
CONSUMPTION	6.44 ton/day, 90% MCR

MACHINERY

MAIN ENGINE	CAT, 2 x 746 kW, 1600 rpm
DIESEL GENERATORS	CUMMINS, 2 x 425 kW
SHAFT GENERATOR	N/A
EMERGENCY DIESEL GENERATOR	CUMMINS, 1 x 180 kW

BOILER	ZAFA, 2 x Oil fired steam boilers, 2300-2400 kg/h at 10-12 bar
ECONOMISER	N/A
CARGO EQUIPMENT	
CARGO PUMPS	TUSHACO, 3 x 325 m ³ /h at 8 bar
PORTABLE CARGO PUMP	N/A
HEATING	Stainless Steel heating coils
WASHING	POLAR, 10 fixed + 2 portable machines
MANOEUVRING EQUIPMENT	
BOW THRUSTER	Electric driven, fixed pitch, 180 kW
PROPELLER	Fixed type, 4 blades, 2100 mm, 270 rpm
RUDDER & STEERING GEAR	Fish trail rudder, DATA, 45 P/S
ACCOMMODATION	
CREW	8 single bed cabins
CLASS NOTATION	BV I 3/3 E + OIL TANKER7CHEMICAL TANKER, DEEP SEA + MACH AUT-MS, ICE IC ESP



