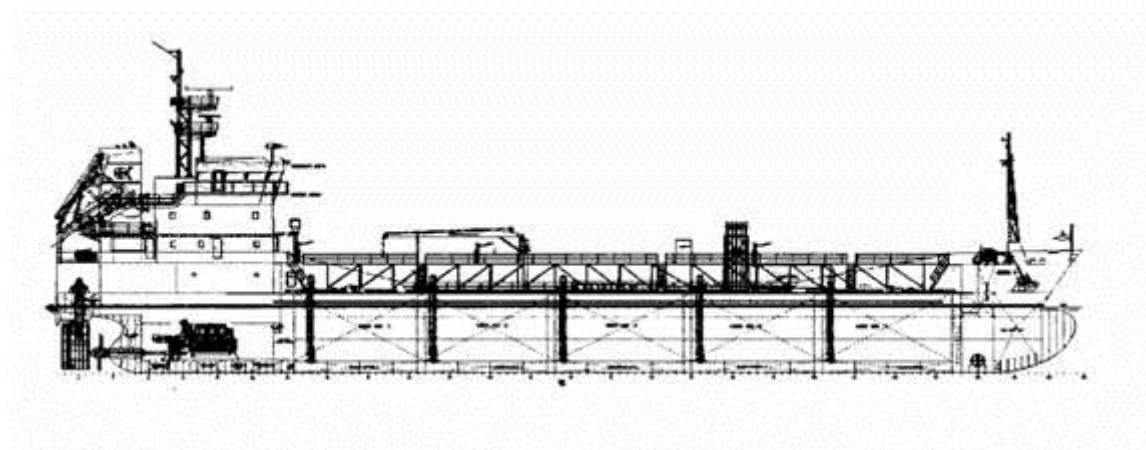


## Chemical / Product Tanker



# M / T AKAY - 1

### GENERAL

- Ice-strengthened, single decked, single screw motor ship with double bottom and double skin, coated cargo tanks.
- The hull form, arrangement and machinery for favourable economic operation , environmentally friendly, reliability and flexibility provided.

<b>TYPE</b>	IMO II Chemical Tanker
<b>DEADWEIGHT</b>	3200 tons
<b>OWNER</b>	Turkish
<b>SHIPYARD</b>	Çeliktrans Shipyard / ISTANBUL , Hull No: CS27
<b>DELIVERY</b>	2004
<b>DESIGN</b>	Admarin Designers Consultants Contractors/ ISTANBUL

<b>PRINCIPAL DIMENSIONS</b>	
<b>LENGTH O.A.</b>	88.20 m
<b>LENGTH B.P.</b>	82.15 m
<b>BREADTH MOULDED</b>	13.00 m
<b>DEPTH MOULDED</b>	7.25 m
<b>DRAUGHT MOULDED</b>	5.75 m
<b>TONNAGE</b>	
<b>DEADWEIGHT</b>	3200 tons
<b>GROSS TONNAGE</b>	2500 GRT apprx
<b>NET TONNAGE</b>	1050 NRT aprox.
<b>CAPACITIES</b>	
<b>CARGO</b>	3684 m <sup>3</sup>
<b>BALLAST</b>	1400 m <sup>3</sup>

<b>HFO</b>	167 m <sup>3</sup>
<b>MDO</b>	45 m <sup>3</sup>
<b>SLOP TANKS</b>	70 m <sup>3</sup>
<b>FW TANKS</b>	84 m <sup>3</sup> ?
<b>SPEED &amp; CONSUMPTION</b>	
<b>SPEED</b>	13.0 knots, at 90% MCR
<b>CONSUMPTION</b>	7.55 ton / day, at 90% MCR
<b>MACHINERY</b>	
<b>MAIN ENGINE</b>	MaK 6M25 , 1 x 1850 kW, 750 rpm
<b>DIESEL GENERATORS</b>	CAT , 3 x 320 kW
<b>SHAFT GENERATOR</b>	600 Kw
<b>EMERGENCY DIESEL GENERATOR</b>	CAT , 1 x 99 kW
<b>BOILER</b>	S-MAN , 2 x Oil fired steam boilers, 1800 kg/h
<b>ECONOMISER</b>	S – MAN, 1 x 500 kg /h
<b>CARGO EQUIPMENT</b>	
<b>CARGO PUMPS</b>	SVANEHOJ , 10 x 150 m <sup>3</sup> /h r
<b>PORTABLE CARGO PUMP</b>	SVANEHOJ NH 80-1-NE, hydraulic driven
<b>HEATING</b>	Stainless Steel heating coils
<b>WASHING</b>	Daisic 20 piece fixed/2 piece portable
<b>MANOEUVRING EQUIPMENT</b>	
<b>BOW THRUSTER</b>	Electric driven, fixed pitch, 240 kW
<b>PROPELLER</b>	ZF, CPP , 4 blades, 3300 mm, 185 rpm
<b>RUDDER &amp; STEERING GEAR</b>	high lift rudder , DATA DDS12000, 12000 dNm
<b>ACCOMMODATION</b>	
<b>CREW</b>	14 single bed cabins
<b>CLASS NOTATION</b>	BV I 3/3 + OIL TANKER/CHEMICAL TANKER, DEEP SEA + MS, ICE ID ESP