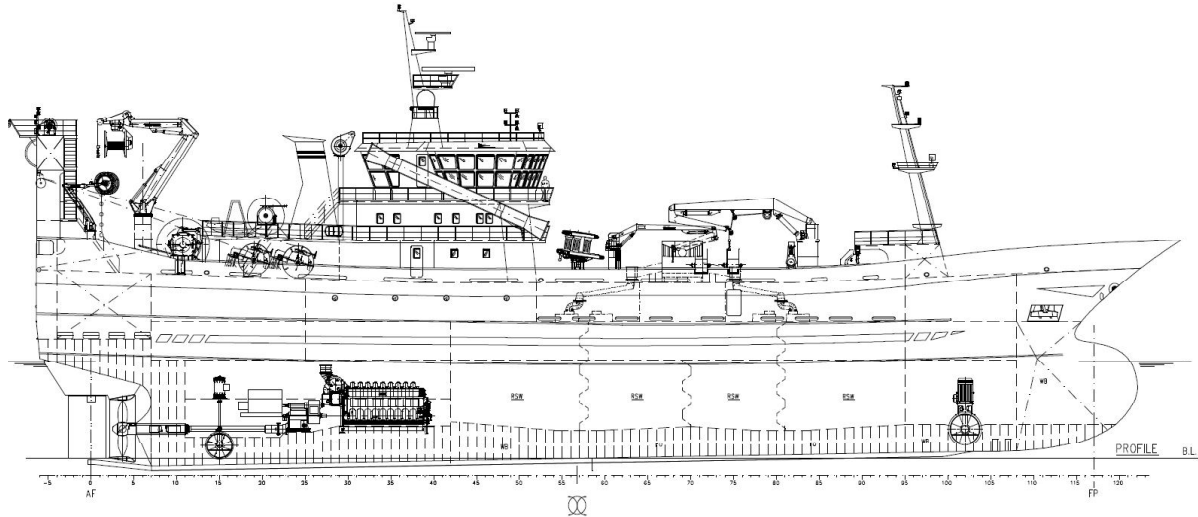
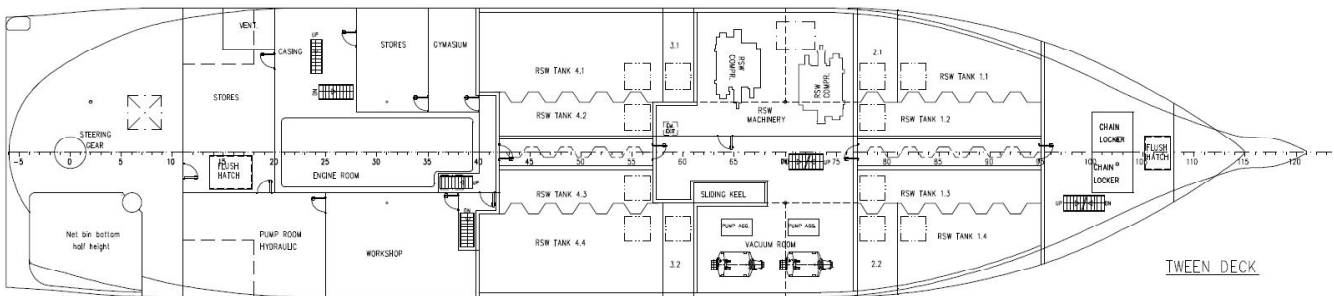
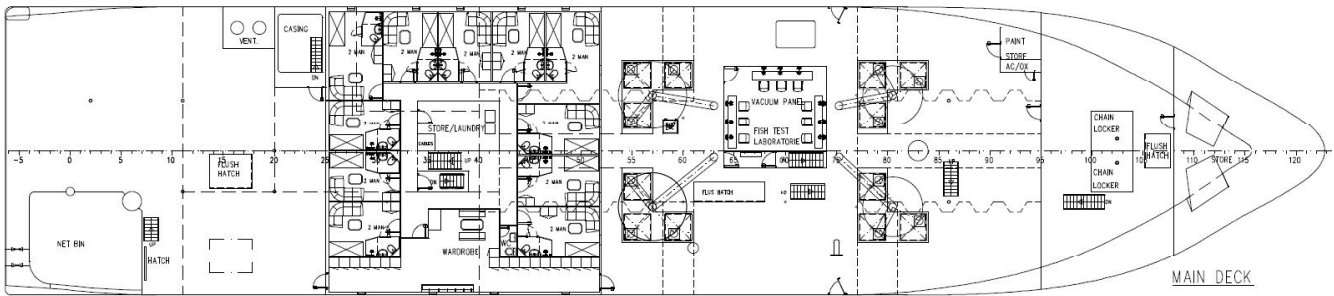


# PURSE SEINER TRAWLER MALENE S



## PRINCIPAL DIMENSIONS

<b>LENGTH O.A.</b>	80,30m
<b>LENGTH B.P.</b>	70,20m
<b>BREADTH MLD.</b>	17,00m
<b>DEPTH MLD.</b>	09,60m



<b>TYPE</b>	Purse Seine Trawler
<b>DEADWEIGHT</b>	2700 Dwt
<b>GROSS TON.</b>	3650 Grt
<b>OWNER</b>	Skarunungen AS
<b>SHIPYARD</b>	Celiktrans Shipyard / ISTANBUL Hull No: CS43
<b>DELIVERY</b>	December 2012
<b>DESIGN</b>	Sawicon

<b>CAPACITIES</b>	
<b>FISH HOLDS</b>	2300m <sup>3</sup>
<b>FUEL OIL</b>	400m <sup>3</sup>
<b>FRESH WATER</b>	80m <sup>3</sup>
<b>WATER BALLAST</b>	300m <sup>3</sup>
<b>MACHINERY</b>	
<b>MAIN ENGINE</b>	MAK 9M32C 4300KW
<b>DIESEL GENERATORS</b>	AUX 1: 1900KW, AUX 2: 600KW 1X2300KW Shaft Generator
<b>MANOEUVRING EQUIPMENT</b>	
<b>PROPELLER</b>	Cp.Propeller 4 blades -4000mm dieamter in nozzle
<b>BOW THRUSTER</b>	1000kw Brunvoll
<b>STERN THRUSTER</b>	1000Kw Aft
<b>ACCOMMODATION</b>	
<b>CREW</b>	26 Persons in single Cabins and 2 man cabins
<b>CLASS NOTATION</b>	+DNV , 1A1 Fishing / Cargo Vessel

