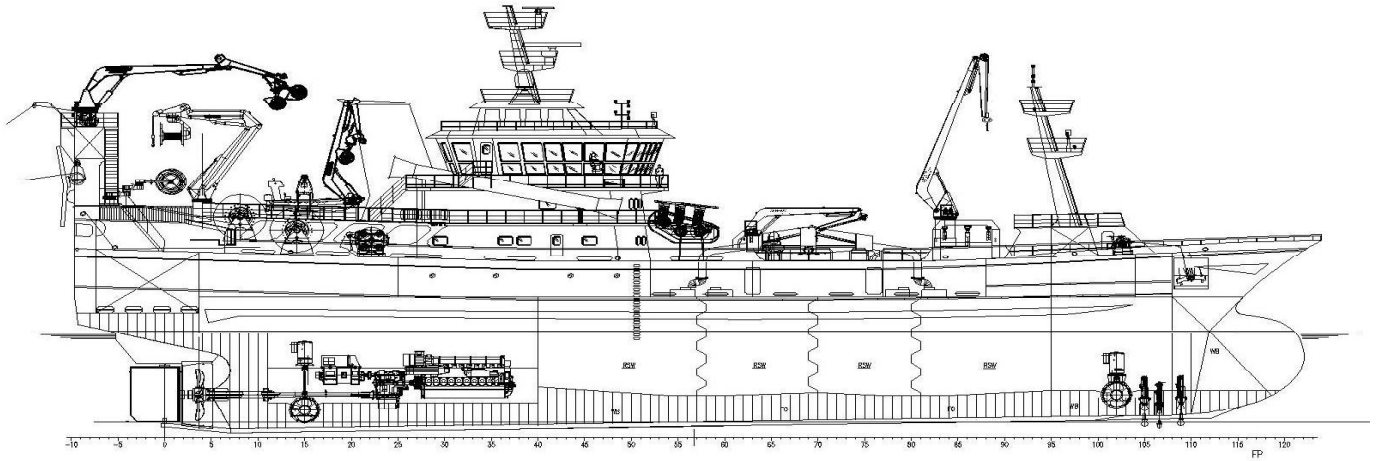
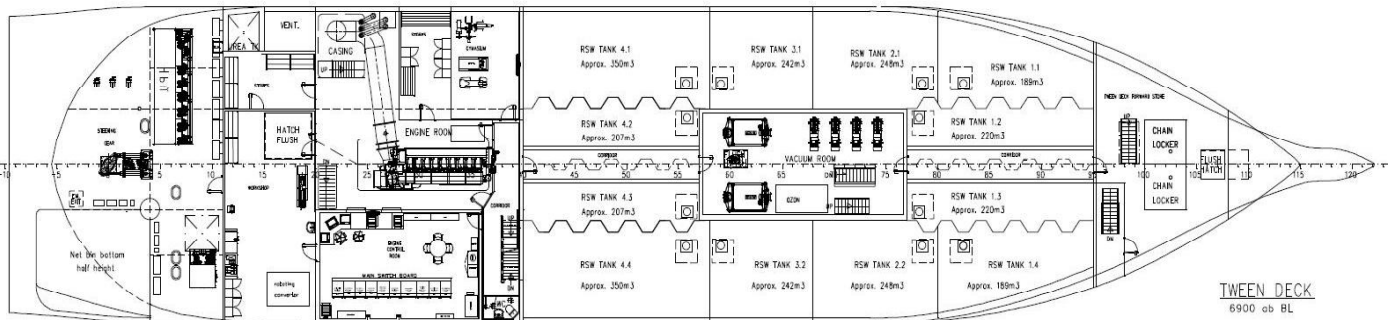
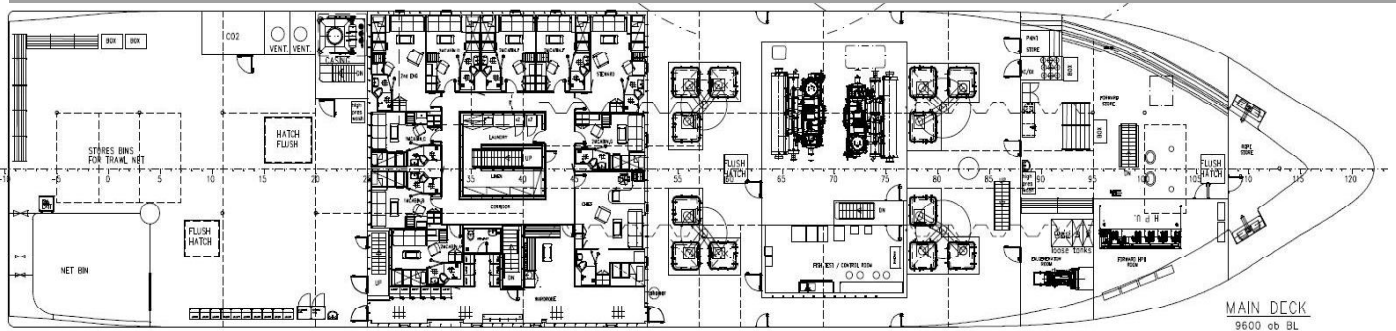


PURSE SEINER TRAWLER EX-MAGNARSON SIGURDUR



PRINCIPAL DIMENSIONS

LENGTH O.A.	80.30m
LENGTH B.P.	70.20m
BREADTH MLD.	17.00m
DEPTH MLD.	09.60m



TYPE	Purse Seiner Trawler
DEADWEIGHT	2900 Dwt
GROSS TON.	3600 Grt
OWNER	EX-MAGNARSON AS - NEW OWNER :ISFELAG
SHIPYARD	Celiktrans Shipyard / ISTANBUL Hull No: CS44
DELIVERED	JULY 2014
DESIGN	Sawicon

CAPACITIES	
FISH HOLDS	2915m ³
FUEL OIL	350m ³
FRESH WATER	70m ³
WATER BALLAST	300m ³
MACHINERY	
MAIN ENGINE	Wartsila 9L32 - 4500KW
GENERATORS	Aux. Diesel: 3 x Scania DI 16 55M / 4500Kw - 750Rpm Aux. Alternator: 3 x Lorey Somer Lsam 49.S4 / 702Kva Emg. Diesel: 1 x Sisu 74CTAG-4V / 220Kw – 180Rpm Emg. Alternator: 1 x Lsam 46.2L6 / 290Kva Shaft Generator: 1 x Wartsila 3250Kwa AT 60Hz / Pto
MANOEUVRING EQUIPMENT	
PROPELLER	Controllable Pitch Propeller System - 1 x Wartsila 4D1095
BOW THRUSTER	1 X CPT 1,75-D with CP Propeller
STERN THRUSTER	1 X CPT 1,75-D with CP Propeller
ACCOMMODATION	
CREW	20 Persons in single Cabins and two man cabins
CLASS NOTATION	BV 1 Fishing Vessel, Unrestricted Navigation, AUT-UMS

