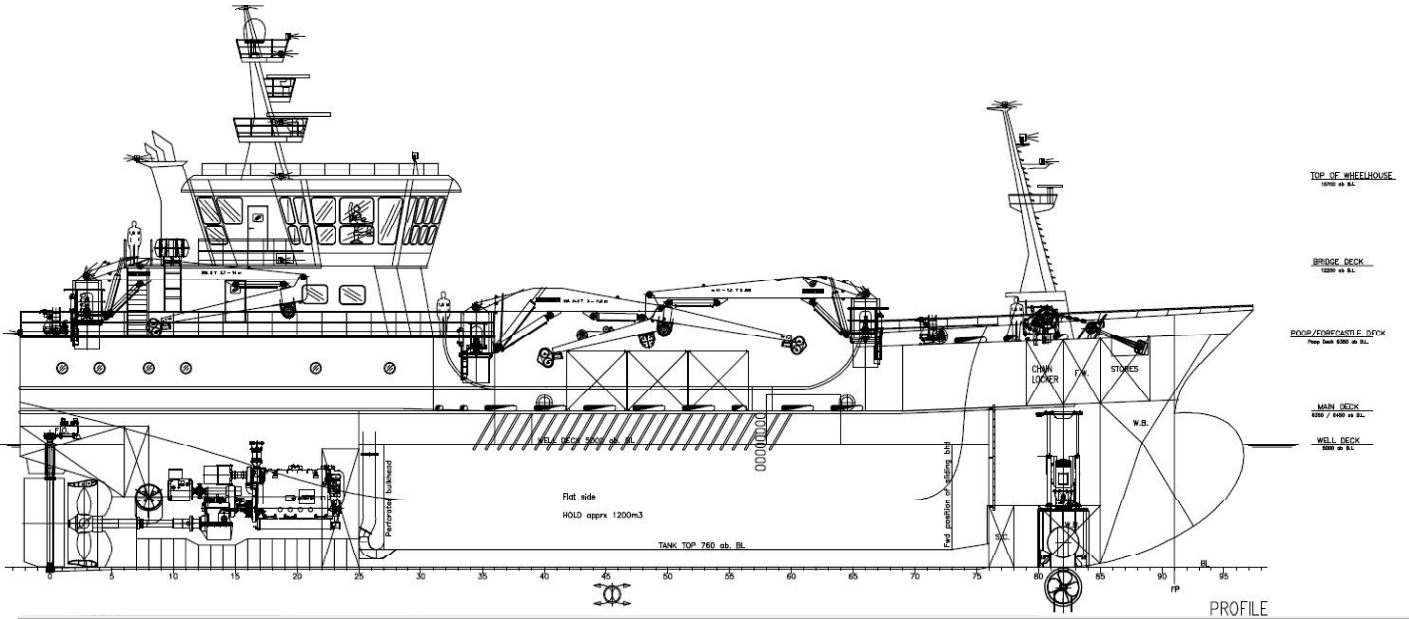
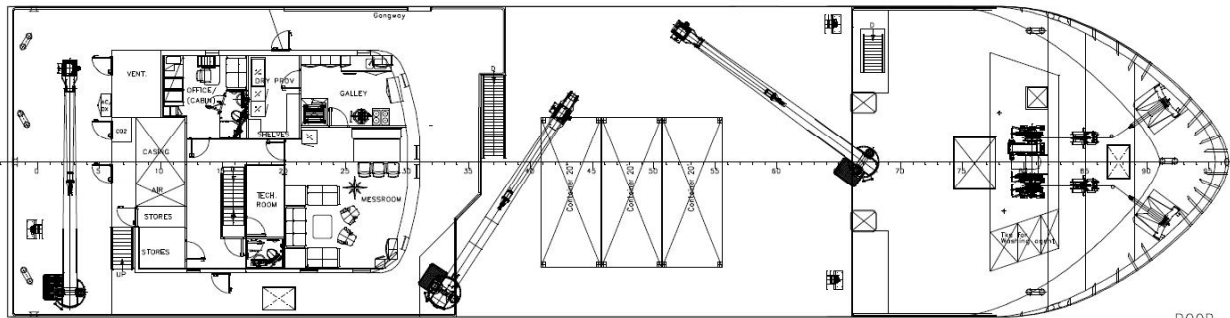


# LIVE FISH CARRIER CS45 LILLY JOHANNE

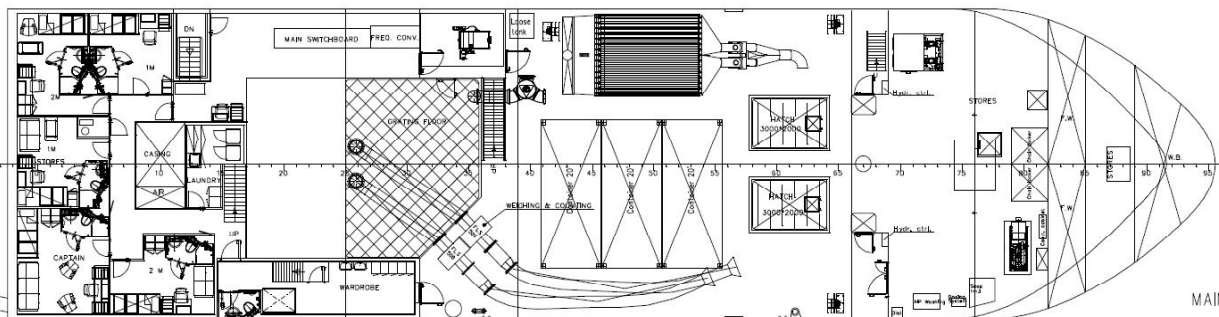


PROFILE

<b>TYPE</b>	Live Fish Carrier
<b>CARGO CAPACITY</b>	1200m <sup>3</sup>
<b>OWNER</b>	AQUA STAR AS
<b>SHIPYARD</b>	Celiktrans Shipyard / ISTANBUL Hull No: CS45
<b>DELIVERY</b>	
<b>DESIGN</b>	Sawicon



POOP- / FORECASTLE DECK



MAIN DECK

<b>CAPACITIES</b>	
FISH HOLDS	1246m <sup>3</sup>
FUEL OIL	109m <sup>3</sup>
FRESH WATER	38m <sup>3</sup>
WATER BALLAST	99m <sup>3</sup>
<b>MACHINERY</b>	
MAIN ENGINE	Caterpillar C280-61730BkW at 900Rpm
GENERATORS	Aux. Diesel: 2 x Scania DI 16 074M / 596Kw - 1800Rpm Aux. Alternator: 2 x Lorey Somer Lsam 49.S4 / 780Kva Emg. Diesel: 1 x Scania DI 13 074M / 5300Kw - 1800Rpm Emg. Alternator: 1 x Lsam 46.2M5 230kVA Shaft Generator: 1 x Inpower / pmg-850-1800-12
<b>MANOEUVRING EQUIPMENT</b>	
PROPELLER	Finnoy – Cp.Propeller Type P78.300.4D the propeller is 4-bladed with diameter 3000mm
<b>PRINCIPAL DIMENSIONS</b>	
LENGTH O.A.	49,75
LENGTH B.P.	45,50m
BREADTH MLD.	12,60m
DEPTH MLD.	6,35m
BOW THRUSTER	A1 Veth – L-Drive Retractable in Tunnerl, type VLT 550/400kW
STERN THRUSTER	Peter's Marine Hydraulics –ST100-500-SH
<b>ACCOMMODATION</b>	
CREW	8 Person in single and two man cabins
CLASS NOTATION	BV Hull Match;Special Service- Unrestricted Navigation

