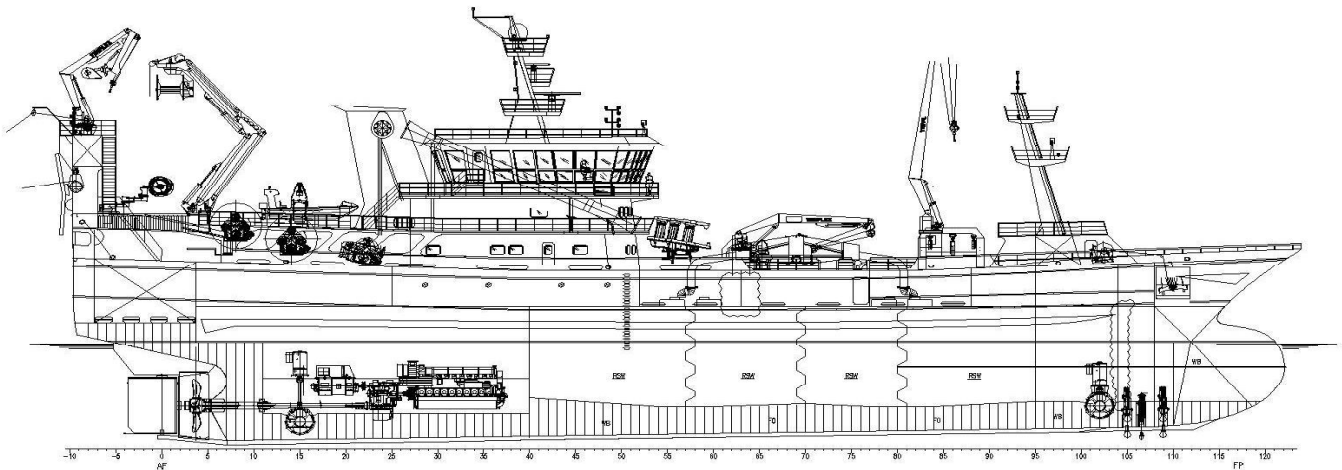
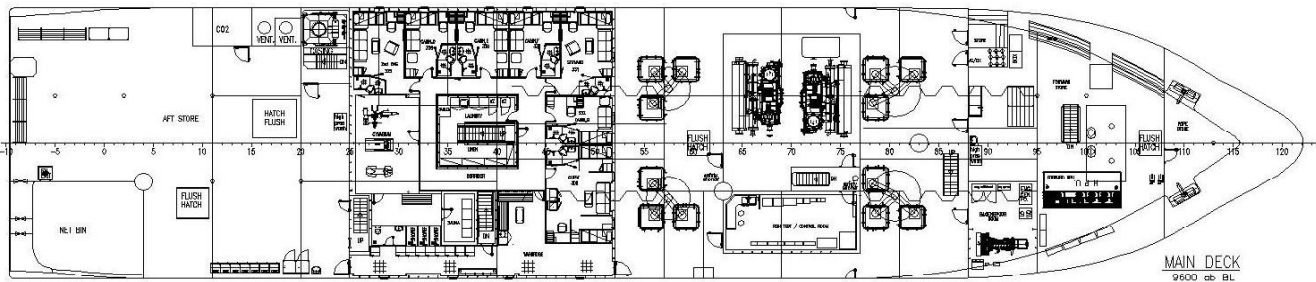


# PURSE SEINER TRAWLER CS46 / CS47

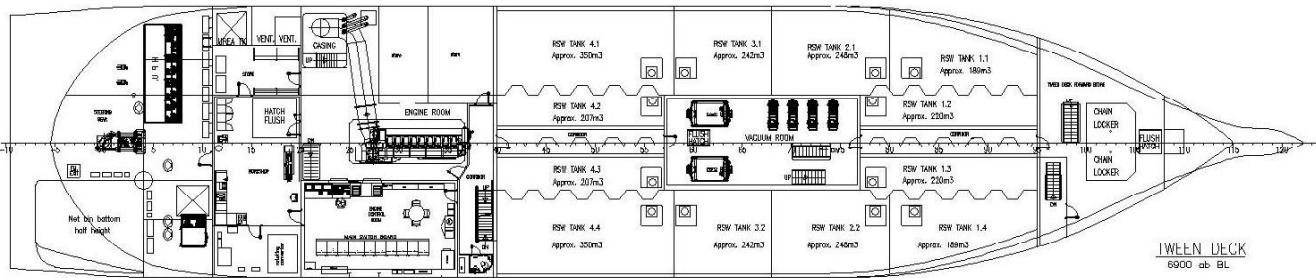


## PRINCIPAL DIMENSIONS

<b>LENGTH O.A.</b>	80.30m
<b>LENGTH B.P.</b>	70.20m
<b>BREADTH MLD.</b>	17.00m
<b>DEPTH MLD.</b>	09.60m



MAIN DECK  
9600 ab BL



TWEEN DECK  
6900 ab BL

<b>TYPE</b>	Purse Seiner Trawler
<b>DEADWEIGHT</b>	2900 Dwt
<b>GROSS TON.</b>	3600 Grt
<b>OWNER</b>	HB GRANDI
<b>SHIPYARD</b>	Celiktrans Shipyard / ISTANBUL Hull No: CS46 / CS47
<b>DELIVERY</b>	CS46 February 2015 / CS47 September 2015
<b>DESIGN</b>	Sawicon

CAPACITIES	
FISH HOLDS	2915m <sup>3</sup>
FUEL OIL	350m <sup>3</sup>
FRESH WATER	70m <sup>3</sup>
WATER BALLAST	300m <sup>3</sup>
MACHINERY	
MAIN ENGINE	Wartsila 9L32 - 4500KW
GENERATORS	<b>Aux. Diesel:</b> 3 x Scania DI 16 55M / 4500Kw - 750Rpm <b>Aux. Alternator:</b> 3 x Lorey Somer Lsam 49.S4 / 702Kva <b>Emg. Diesel:</b> 1 x Sisu 74CTAG-4V / 220Kw – 180Rpm <b>Emg. Alternator:</b> 1 x Lsam 46.2L6 / 290Kva <b>Shaft Generator:</b> 1 x Wartsila 3250Kwa AT 60Hz / Pto
MANOEUVRING EQUIPMENT	
PROPELLER	Controllable Pitch Propeller System -1 x Wartsila 4D1095
BOW & STERN THRUSTER	Brunvoll FU63LTC1750- Electric Drive: Lorey Somer PLS 400LB 1188Rpm 950Kw 440V 60Hz
ACCOMMODATION	
CREW	11 Persons, 12 Single Cabins
CLASS NOTATION	BV 1 Fishing Vessel, Unrestricted Navigation, AUT-UMS

