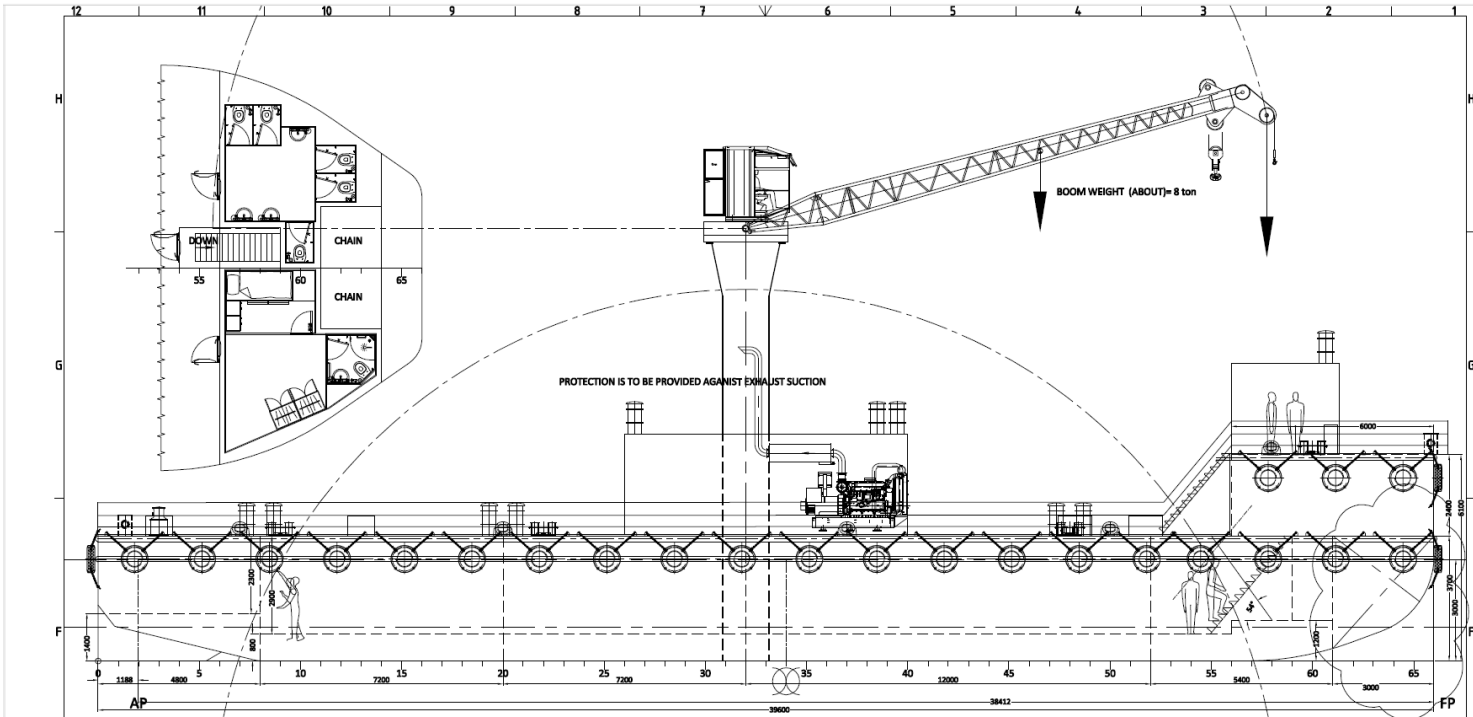
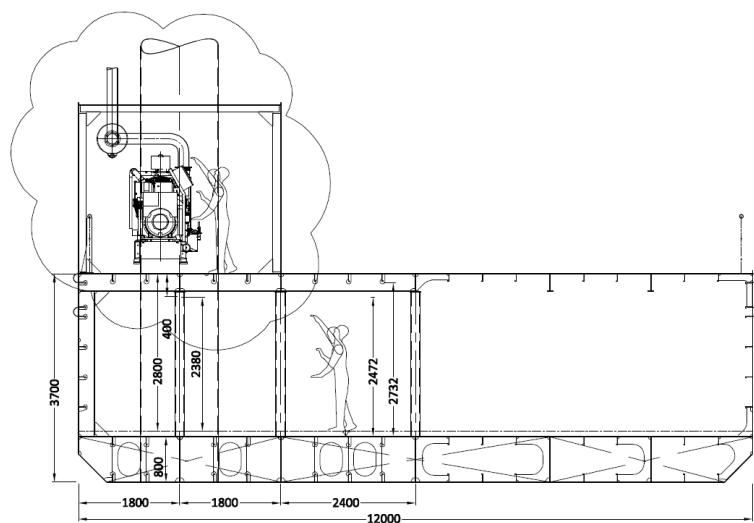
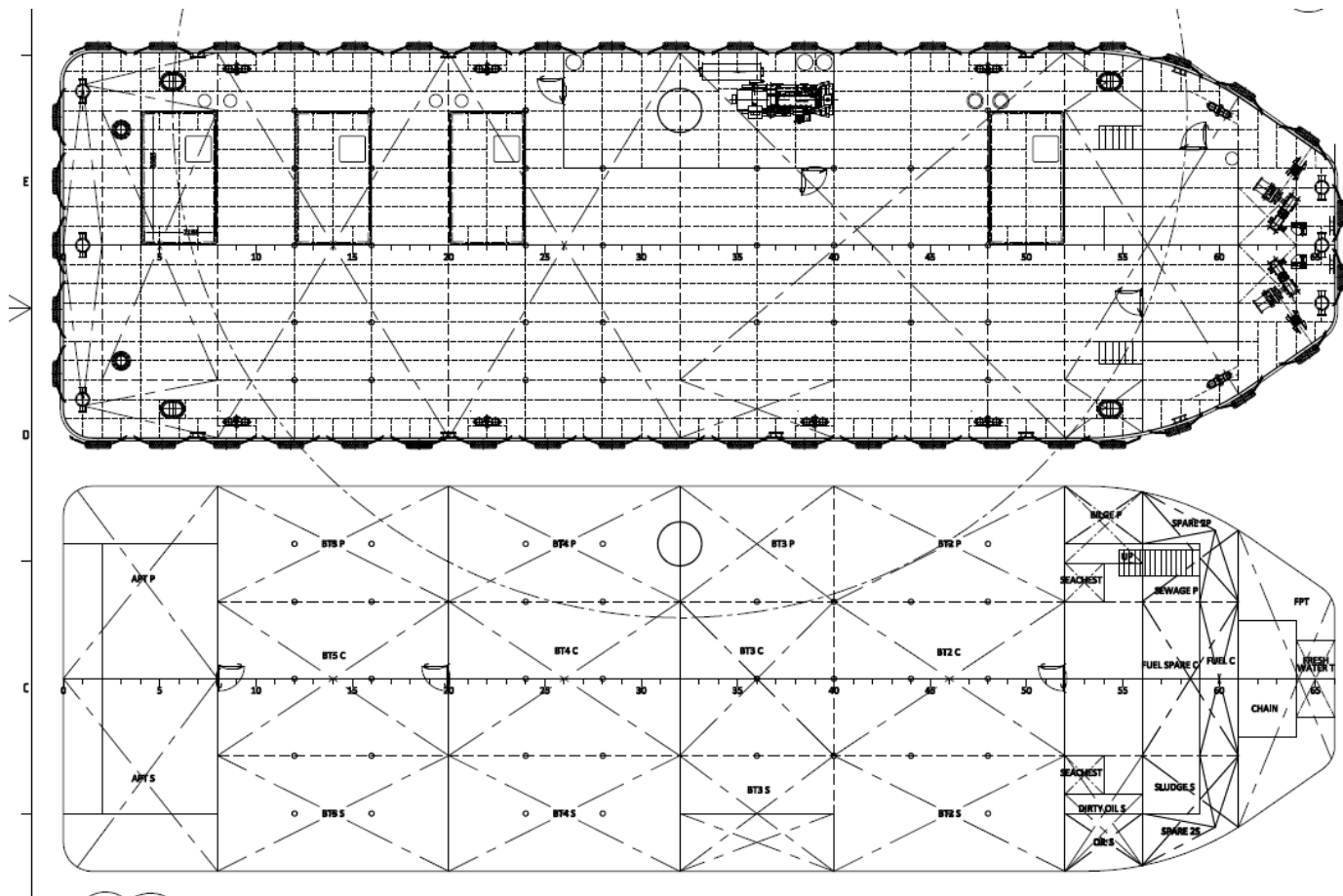


## WORK BARGE : CELIKTRANS 1



### SHIP PARTICULARS

|                         |   |                            |
|-------------------------|---|----------------------------|
| <b>VESSEL'S NAME</b>    | : | <b>ÇELİKTRANS 1</b>        |
| <b>VESSEL TYPE:</b>     | : | <b>WORK BARGE</b>          |
| <b>NATIONALITY</b>      | : | <b>TURKEY</b>              |
| <b>PORT OF REGISTRY</b> | : | <b>TUZLA</b>               |
| <b>OWNER</b>            | : | <b>ÇELİKTRANS SHIPYARD</b> |
| <b>BUILT AT</b>         | : | <b>ISTANBUL- TURKEY</b>    |
| <b>BUILD BY</b>         | : | <b>CELIKTRANS SHIPYARD</b> |
| <b>YEAR BUILD</b>       | : | <b>2019</b>                |
| <b>LOA</b>              | : | <b>39.6m</b>               |
| <b>LWL</b>              | : | <b>39.6m</b>               |
| <b>HULL BREADTH</b>     | : | <b>12m</b>                 |
| <b>DEPTH MOULDED</b>    | : | <b>3.7m</b>                |
| <b>DRAFT DESING</b>     | : | <b>3m</b>                  |
| <b>DISPLACEMENT</b>     | : | <b>1334t</b>               |
| <b>CRANE</b>            | : | <b>5t</b>                  |



**MAIN DIMENSIONS**

|                              |                          |            |
|------------------------------|--------------------------|------------|
| LENGHT OVERALL               | LOA                      | : 39.600 m |
| LENGHT WATERLINE             | LWL                      | : 39.600 m |
| LENGHT RULE                  | 0.97xLWL                 | : 38.412 m |
| BREADTH MOULDED              | B                        | : 12.000 m |
| DEPTH MOULDED                | D                        | : 3.700 m  |
| DRAFT DESIGN                 | Ts                       | : 3.000 m  |
| DISPLACEMENT                 | Ts, 1025t/m <sup>3</sup> | : 1334.0 t |
| BLOCK COEFFICIENT            | CB                       | : 0.9131   |
| PRISMATIC COEFFICIENT        | CP                       | : 0.9205   |
| MIDSHIP COEFFICIENT          | CM                       | : 0.9920   |
| WATERPLANE COEFFICIENT       | CW                       | : 0.9600   |
| LCB                          | : 19.154m from transom   |            |
| VCB                          | : 1.554m above baseline  |            |
| LCF                          | : 19.080m from transom   |            |
| WETTED SURFACE AREA          | : 706.97m <sup>2</sup>   |            |
| TRANSVERSE MOMENT OF INERTIA | : 5226 m <sup>4</sup>    |            |
| LONG MOMENT OF INERTIA       | : 55702 m <sup>4</sup>   |            |
| FRAME SPACING                | : 600 mm                 |            |