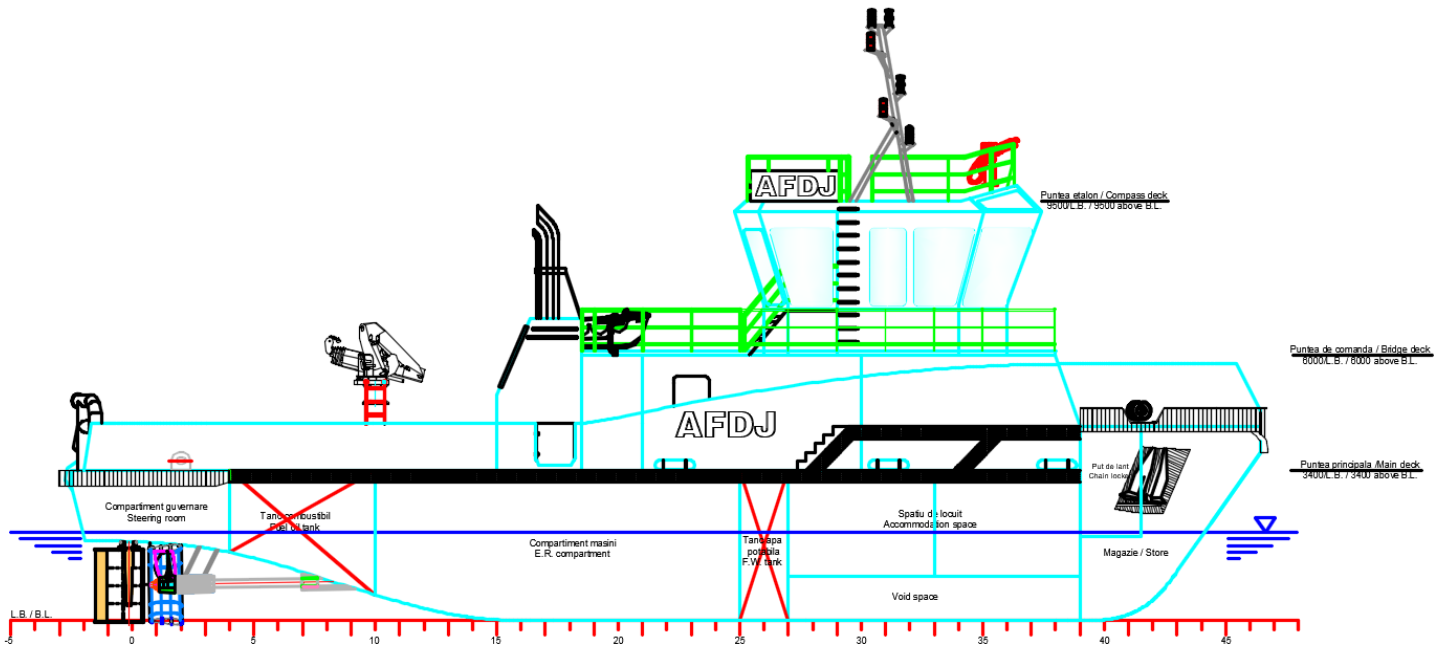


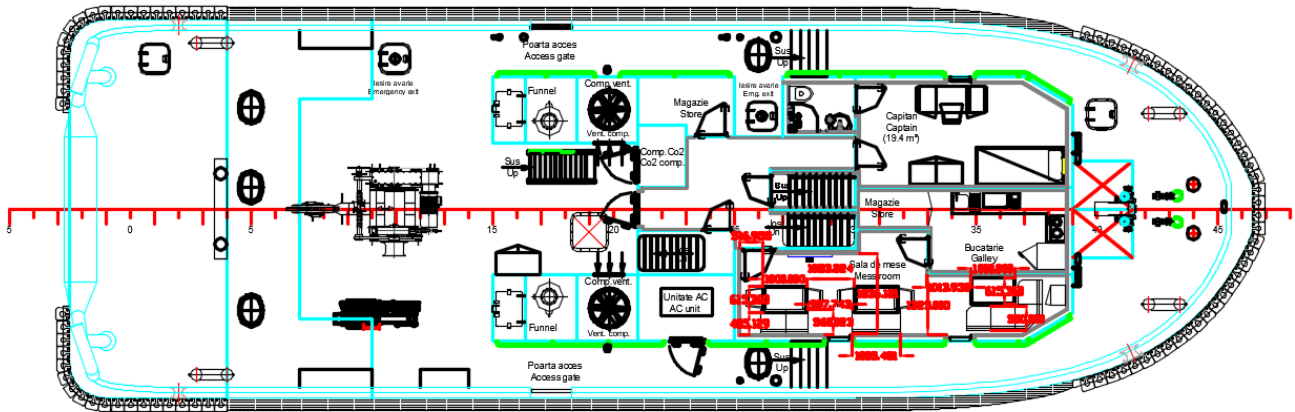
## MULTIPURPOSE ICE CLASS TUG : BECHET



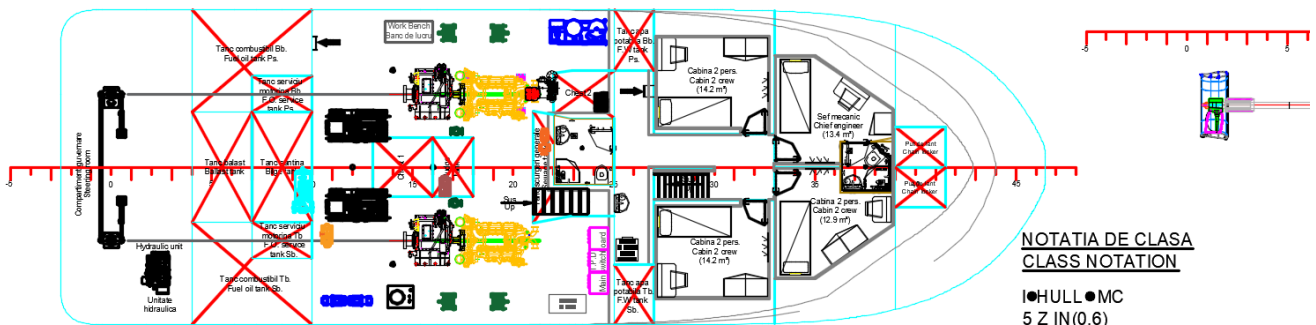
## SHIP PARTICULARS

<b>VESSEL'S NAME</b>	<b>BECHET</b>
<b>VESSEL TYPE:</b>	<b>MULTIPURPOSE ICE CLASS TUG</b>
<b>NATIONALITY</b>	<b>ROMANIA</b>
<b>PORT OF REGISTRY</b>	<b>GALATI RO</b>
<b>OWNER</b>	<b>AFDJ - ROMANIA</b>
<b>BUILT AT</b>	<b>ISTANBUL- TURKEY</b>
<b>YEAR BUILD</b>	<b>2021</b>
<b>BUILD BY</b>	<b>CELIKTRANS SHIPYARD</b>
<b>ENI NUMBER</b>	<b>46000609</b>
<b>CALL SIGN (TEMPORARY)</b>	<b>YQUD</b>
<b>MMSI (TEMPORARY)</b>	<b>264163456</b>
<b>LOA</b>	<b>27.5m</b>
<b>HULL BREADTH</b>	<b>8.6m</b>
<b>HULL DEPTH (AT SIDE)</b>	<b>3.4m</b>
<b>DRAFT</b>	<b>2,16m</b>
<b>DISPLACEMENT</b>	<b>max 271t</b>
<b>TOWING HOOK</b>	<b>25TBP</b>
<b>SPEED</b>	<b>20km/h</b>
<b>AUTHONOMY</b>	<b>1874km</b>
<b>POWER</b>	<b>2 X 1000HP /1800RPM</b>
<b>ENGINE TYPE</b>	<b>C32 ACERT SCAC/ CATERPILLAR</b>
<b>TOTAL NUMBER OF PERSONS ON BOARD</b>	<b>8 Person</b>
<b>AREA OF NAVIGATION</b>	<b>3 ACCORDING TO OMT 1472/2018</b>

**Puntea principala / Main deck**



**Vedere sub puntea principala / View under main deck**



**NOTATIA DE CLASA  
CLASS NOTATION**

● HULL ● MC  
5 Z IN (0.6)  
Tug

**NOTATIA ADITIONALA DE CLASA  
ADDITIONAL CLASS NOTATION**

ICE CLASS IA

**PACK STEERING**

