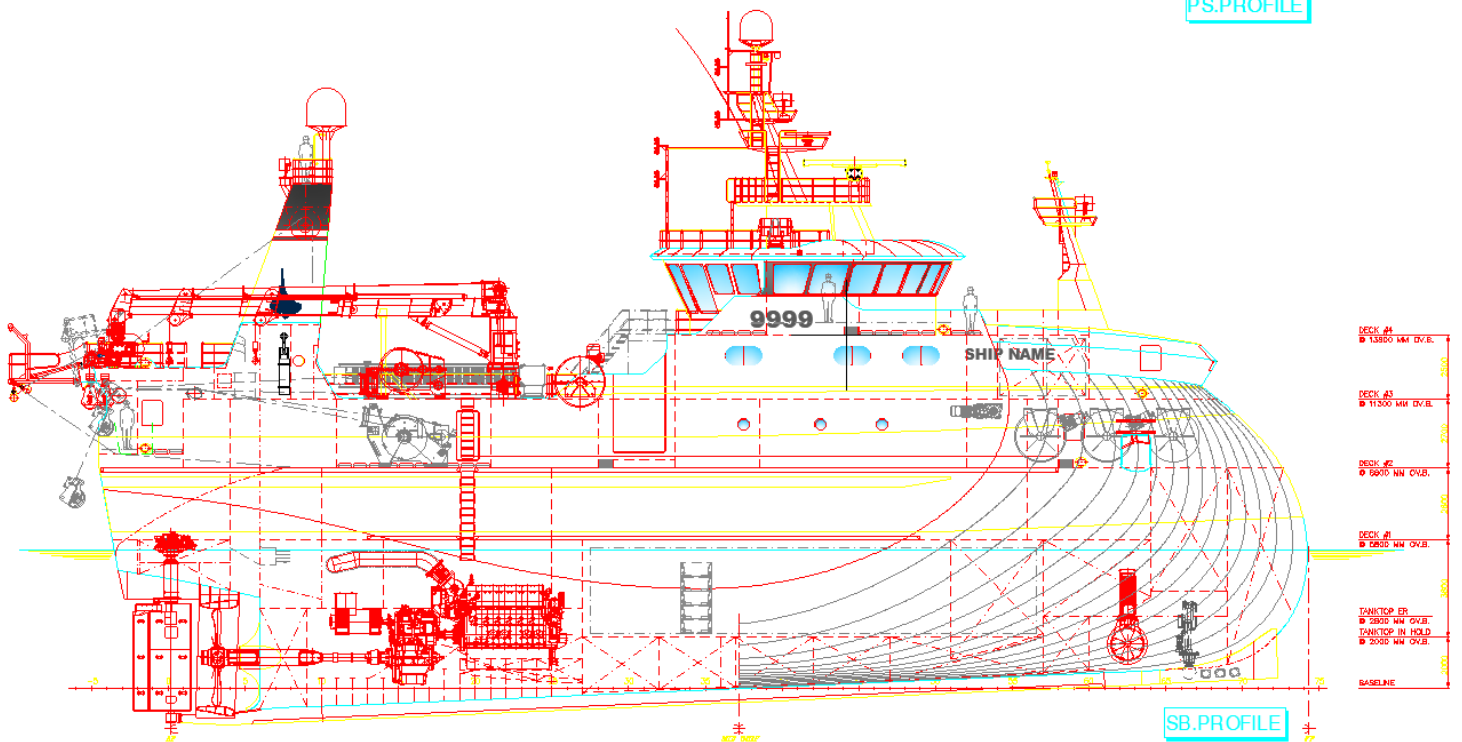


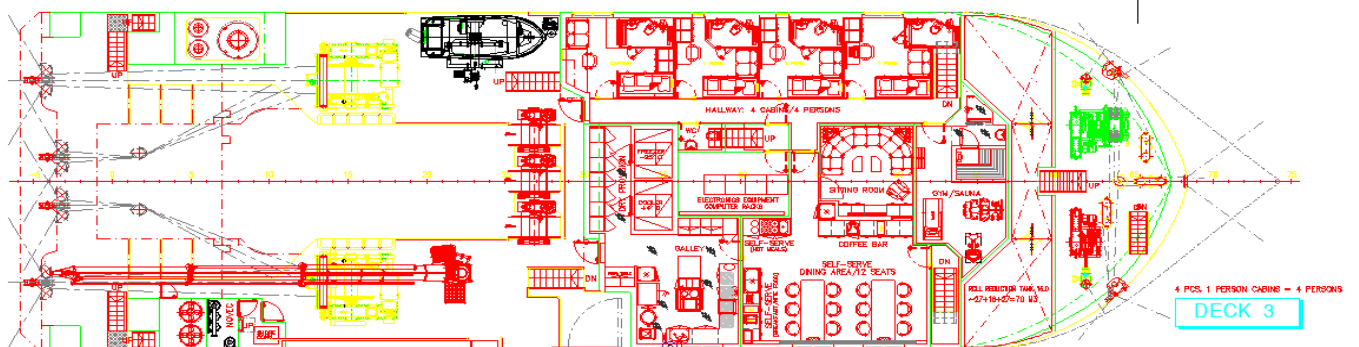
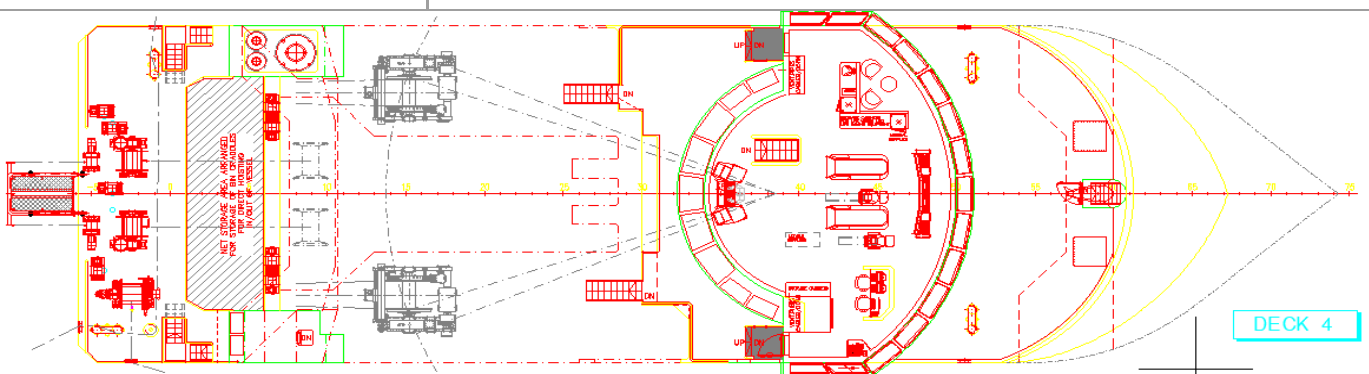
FRESH FISH TRAWLER SIGURBJÖRG AR 67

PS.PROFILE



PRINCIPAL DIMENSIONS

LENGTH O.A.	41.10m
LENGTH B.P.	44.43m
BREADTH MLD.	14.00m
DEPTH MLD.	5,80m



TYPE	FRESH FISH TRAWLER
FISH HOLD CAPACITY	774,m ³
OWNER	RAMMI HF
SHIPYARD	CELIKTRANS SHIPBUILDING COMPANY LTD STI
DELIVERY	2023
DESIGN	NAUTIC
CAPACITIES	
FISH PROCESSING AREA	242m ²
FUEL OIL(MDO)	398m ³
HEELING TANKS (MDO)	15.05m ³ x 2
FRESH WATER	64,44m ³
WATER BALLAST	163,4m ³
MACHINERY	
MAIN ENGINE	MAN 6L27/38 1795kw Rated down from -2100kw
DIESEL GENERATORS	Aux Diesel Eng: 2 x LIAG / MAN 500 kWe / 625 kVA Aux Alternator: 2 x LEROY SOMER LSAM 47.2 M7 Shaft Generator: 1 x AVK 1875 kVA / 1500kW
MANOEUVRING EQUIPMENT	
PROPELLER	MAN, CONTROLLABLE PITCH PROPELLER 4 BLADES, DIAMETER 3800mm
BOW THRUSTER	BRUNVOLL - Tunnel Thruster FU45LTF1225/ 349Kw

ACCOMMODATION	
CREW	Total 15 Crew Members. 5pcs single cabin, 5 pcs double person cabins including a medical/hospital room
CLASS NOTATION	BV, I Hull Mach Fishing Vessel Unrestricted Navigation X Aut-UMS, ICE Class 1D, MONSHAFT

